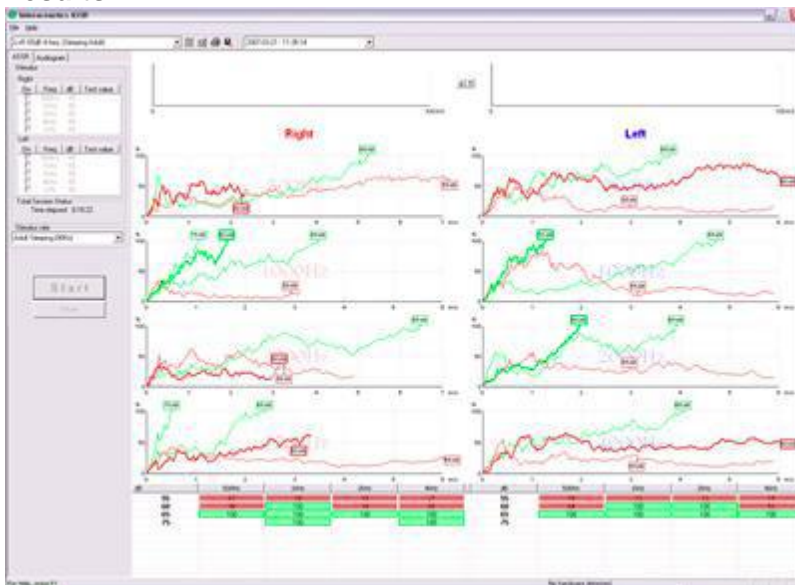


## Interacoustics ASSR Tests

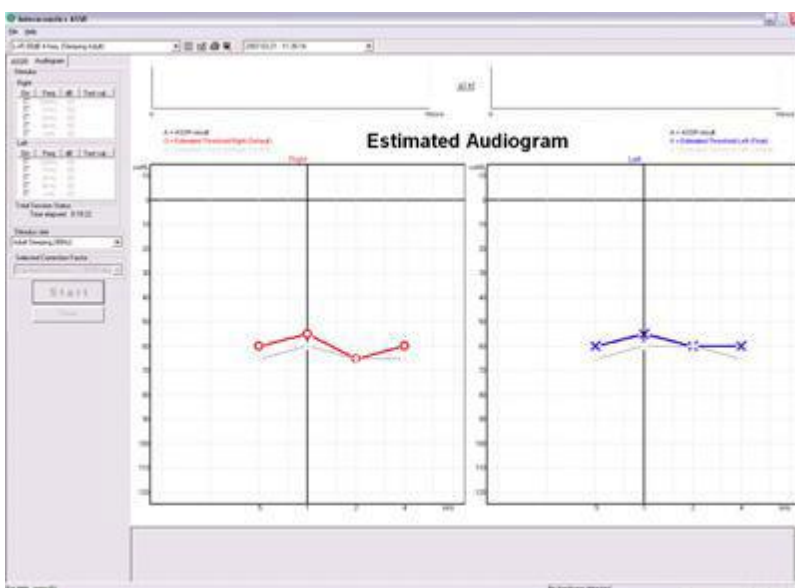
### ASSR – Adult

**Short description:** ASSR test used for objective threshold evaluation. The ASSR test consists of a switchable recording view and audiogram. The user can switch at any time during and after testing between these views. Result is an audiogram typically used to fit a hearing aid **Work Area:** Assessment **Electrode montage:** Traditional 4 electrodes montage, vertex, mastoids, and ground (cheek, low forehead). Alternative 3 electrode montage, vertex, nape, and ground (cheek, low forehead).

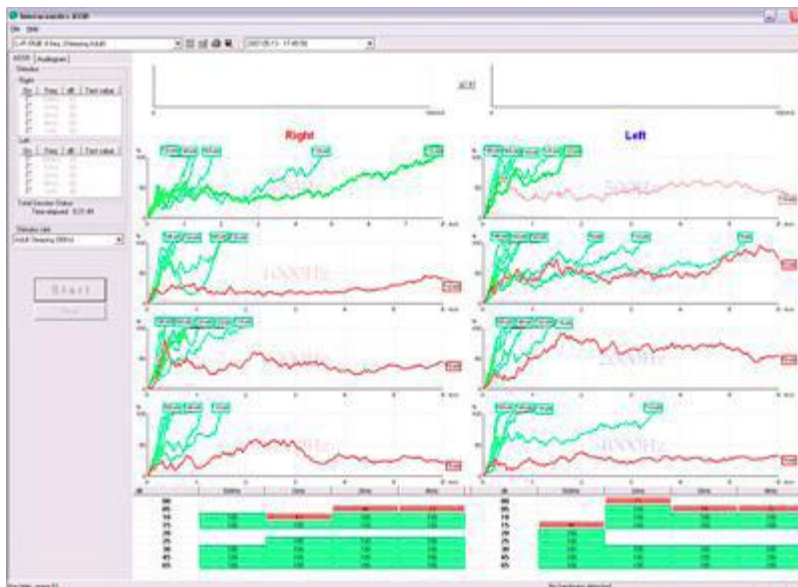
### Results:



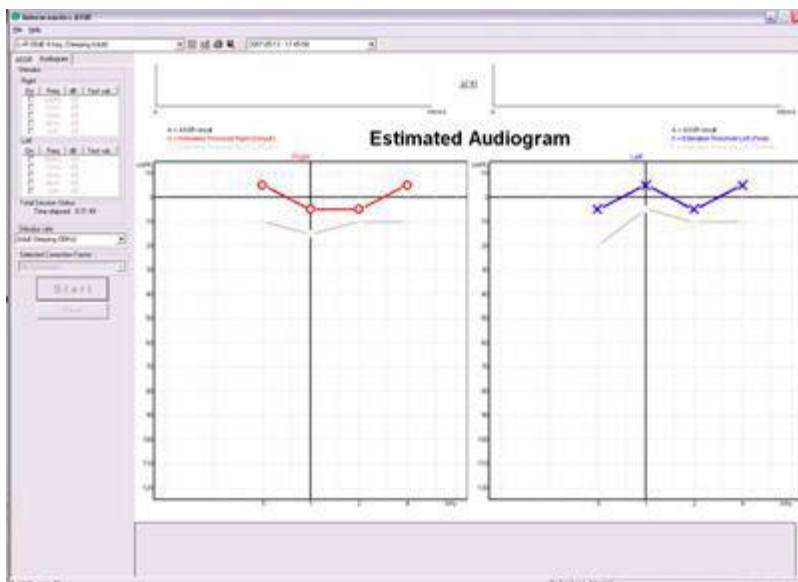
ASSR recording view- hearing loss



Audiogram view- hearing loss



ASSR recording view - normal hearing



Audiogram view - normal hearing