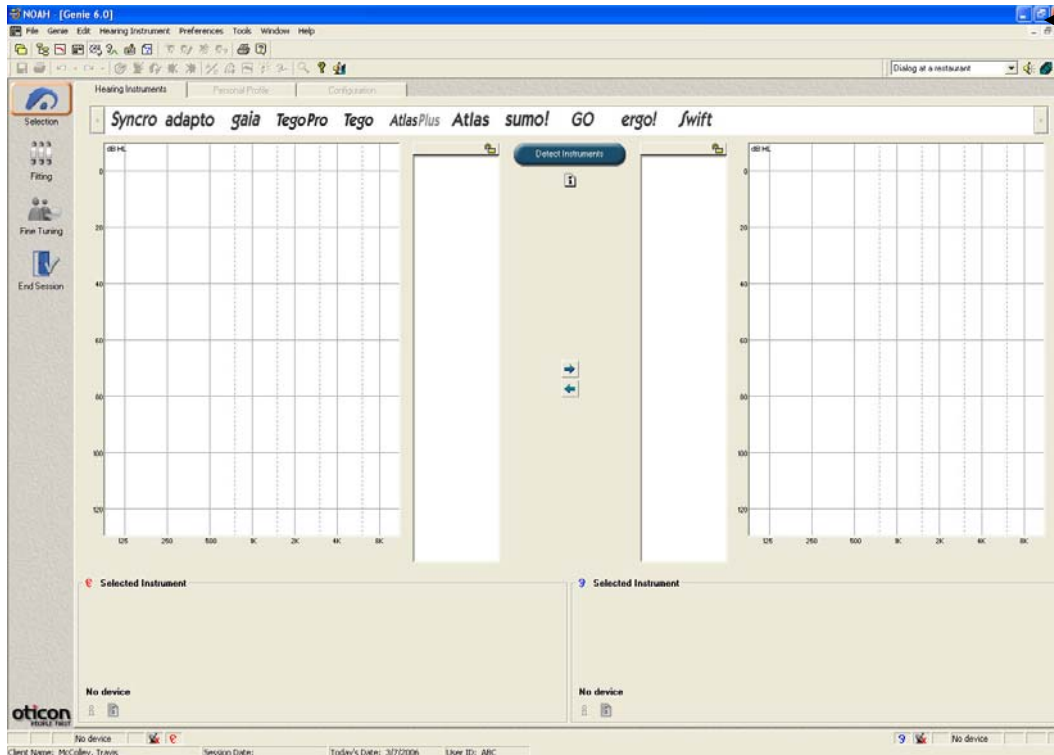


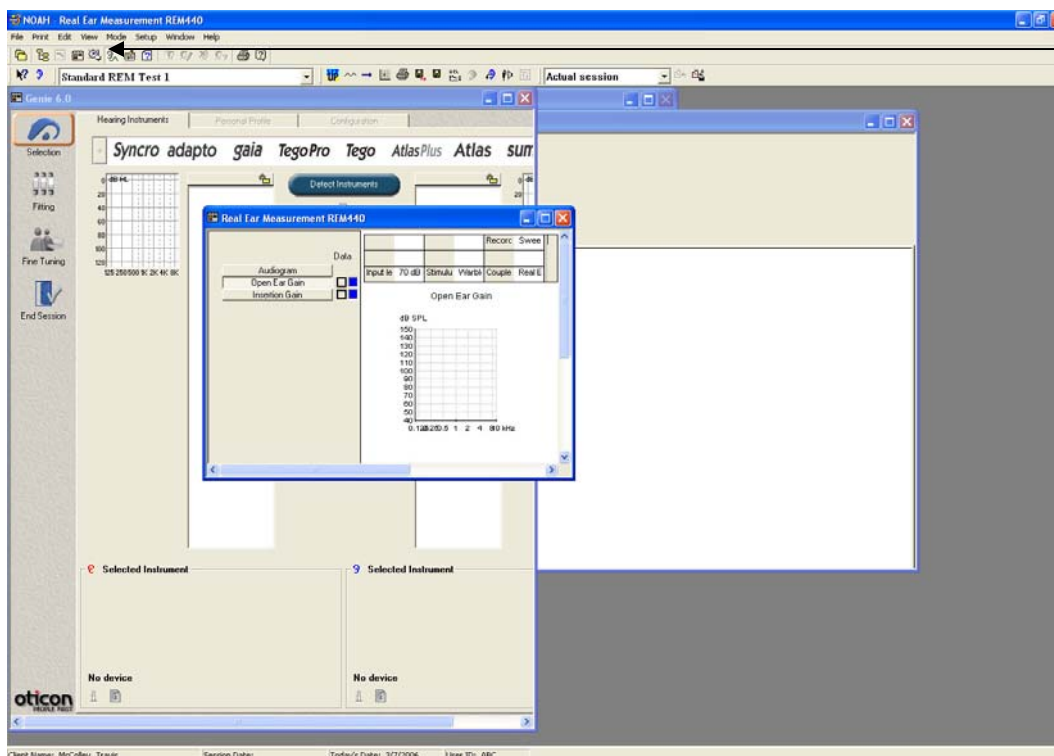


## Simultaneous Screen Mode in Affinity (Using REM440 while programming a hearing aid)

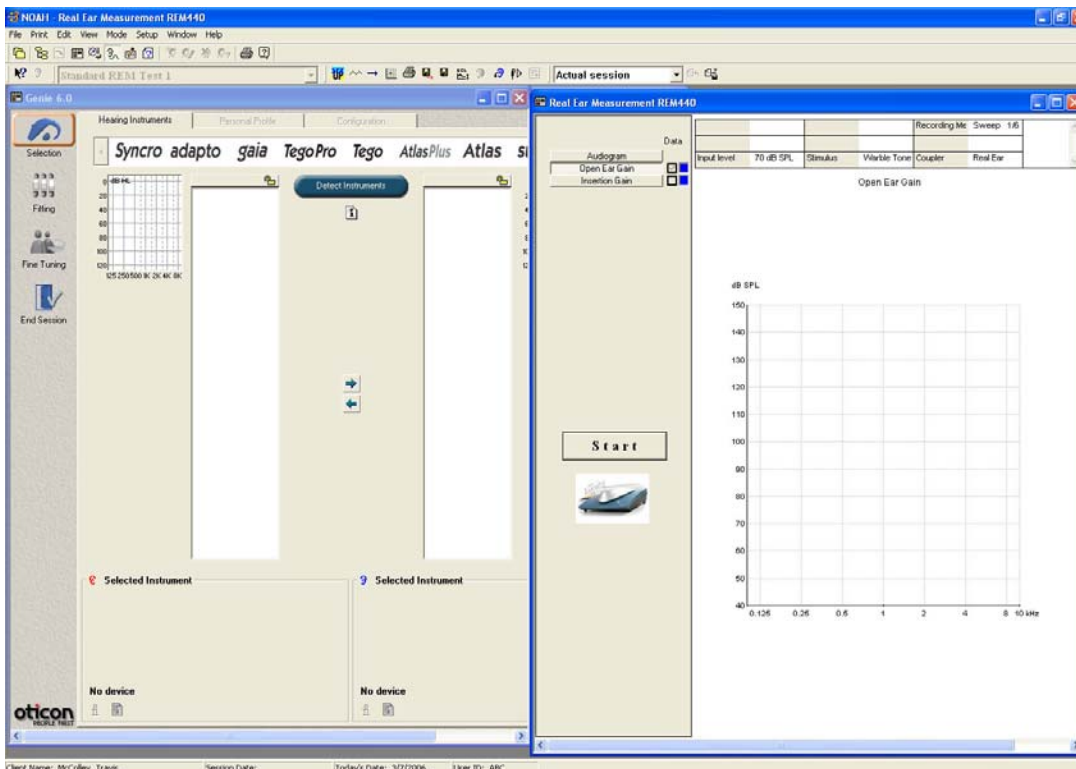
This document shows how to run simultaneous screen modes. This mode allows you to run measurement modules at the same time as fitting modules. This is a feature of NOAH 3.0 and is possible because the Affinity measurement modules are in 32-bit.



After opening the **Fitting Module**, click the **Restore** button to reduce the size of the window. Resize the window to approximately half your screen size.



Click on the **Open REM** icon in the NOAH toolbar to open the REM440 module (if this is not set through NOAH, you can also use the **Module Selection** function).



Resize the REM440 to fit in the other half of your window.

These modules can be run concurrently. To switch between them, just click on the window of the module you want to control.